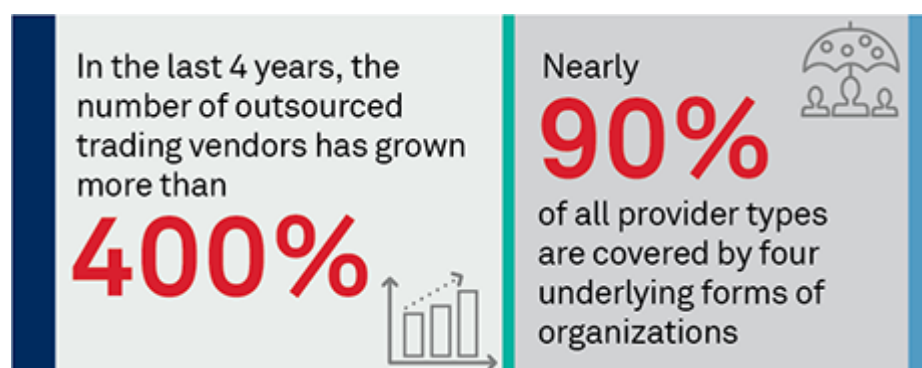


A Deeper Dive into the Outsourced Trading Evolution

July 12, 2022

Executive Summary:



In a market with rising volumes and volatility, yet continuing commission compression and challenging regulatory scrutiny over every aspect of the trade life cycle, more and more firms have begun to explore the opportunities afforded by outsourced trading providers. However, not all outsourced trading firms are cut from the same cloth. Institutions need to recognize the various attributes of the firms that offer these services and the important issues driving the ultimate goal for any firm—achieving best execution for its clients.

Outsourced trading providers offer several different models—ranging from those housed within larger financial institutions to those that are primarily dedicated to offering only outsourced trading. Whatever the model, even the firms that have grown accustomed to these providers still need to probe into the intricacies of how they meet their clients' needs. Whether it is as a full-blown outsourced trading service or a supplemental trading offering, the scale, scope and expertise of the firm providing the offering must all be scrutinized. Depending on the services required, local presence in disparate geographic centers may also be important. Of course, the importance of operational fundamentals cannot be overlooked. At the end of the day, the outsourced provider must be able to offer an additional avenue to enable the institution to achieve its best-execution obligations.

In this paper, we examine the rise of outsourced trading firms, the evolution of the offering (including the expansion into supplemental trading), the types of firms offering outsourced trading, and the factors driving success (or failure) of an outsourced trading relationship.

Methodology:

In the first half of 2022, Coalition Greenwich spoke with U.S.-based financial services professionals familiar with the outsourced trading business to gain insights into its functioning, prospects for growth and competitive landscape. This study is also based on independent research on the subject conducted by Coalition Greenwich.

www.greenwich.com | ContactUs@greenwich.com

Coalition Greenwich, a division of CRISIL, an S&P Global Company, is a leading global provider of strategic benchmarking, analytics and insights to the financial services industry.

We specialize in providing unique, high-value and actionable information to help our clients improve their business performance.

Our suite of analytics and insights encompass all key performance metrics and drivers: market share, revenue performance, client relationship share and quality, operational excellence, return on equity, behavioral drivers, and industry evolution.

About CRISIL

CRISIL is a leading, agile and innovative global analytics company driven by its mission of making markets function better. It is majority owned by S&P Global Inc., a leading provider of transparent and independent ratings, benchmarks, analytics, and data to the capital and commodity markets worldwide.

CRISIL is India's foremost provider of ratings, data, research, analytics, and solutions with a strong record of growth, culture of innovation, and global footprint.

It has delivered independent opinions, actionable insights and efficient solutions to over 100,000 customers through businesses that operate from India, the U.S., the U.K., Argentina, Poland, China, Hong Kong, and Singapore.

For more information, visit www.crisil.com

Disclaimer and Copyright

This Document is prepared by Coalition Greenwich, which is a part of CRISIL Ltd, an S&P Global company. All rights reserved. This Document may contain analysis of commercial data relating to revenues, productivity and headcount of financial services organisations (together with any other commercial information set out in the Document). The Document may also include statements, estimates and projections with respect to the anticipated future performance of certain companies and as to the market for those companies' products and services.

The Document does not constitute (or purport to constitute) an accurate or complete representation of past or future activities of the businesses or companies considered in it but rather is designed to only highlight the trends. This Document is not (and does not purport to be) a comprehensive Document on the financial state of any business or company. The Document represents the views of Coalition Greenwich as on the date of the Document and Coalition Greenwich has no obligation to update or change it in the light of new or additional information or changed circumstances after submission of the Document.

This Document is not (and does not purport to be) a credit assessment or investment advice and should not

form basis of any lending, investment or credit decision. This Document does not constitute nor form part of an offer or invitation to subscribe for, underwrite or purchase securities in any company. Nor should this Document, or any part of it, form the basis to be relied upon in any way in connection with any contract relating to any securities. The Document is not an investment analysis or research and is not subject to regulatory or legal obligations on the production of, or content of, investment analysis or research.

The data in this Document may reflect the views reported to Coalition Greenwich by the research participants. Interviewees may be asked about their use of and demand for financial products and services and about investment practices in relevant financial markets. Coalition Greenwich compiles the data received, conducts statistical analysis and reviews for presentation purposes to produce the final results.

THE DOCUMENT IS COMPILED FROM SOURCES COALITION GREENWICH BELIEVES TO BE RELIABLE. COALITION GREENWICH DISCLAIMS ALL REPRESENTATIONS OR WARRANTIES, EXPRESSED OR IMPLIED, WITH RESPECT TO THIS DOCUMENT, INCLUDING AS TO THE VALIDITY, ACCURACY, REASONABLENESS OR COMPLETENESS OF THE INFORMATION, STATEMENTS, ASSESSMENTS, ESTIMATES AND PROJECTIONS, ANY WARRANTIES OF MERCHANTABILITY OR FITNESS FOR A PARTICULAR PURPOSE ARISING OUT OF THE USE OF ALL OR ANY OF THIS DOCUMENT. COALITION GREENWICH ACCEPTS NO LIABILITY WHATSOEVER FOR ANY DIRECT, INDIRECT OR CONSEQUENTIAL LOSS OR DAMAGE OF ANY KIND ARISING OUT OF THE USE OF ALL OR ANY OF THIS DOCUMENT.

Coalition Greenwich is a part of CRISIL Ltd, an S&P Global company. ©2024 CRISIL Ltd. All rights reserved.

greenwich.com

ContactUs@greenwich.com

Ph +1203.625.5038