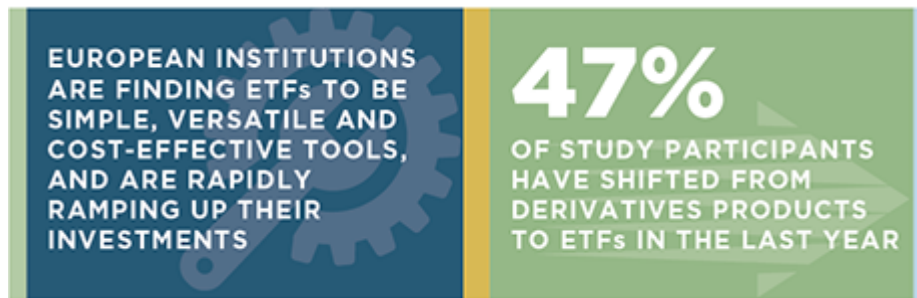


European Institutions Explore New Asset Classes with ETFs

May 15, 2018

Executive Summary:



European institutional investors are adjusting their portfolios to a set of fast-changing conditions that include the return of volatility to global capital markets, the impending end of European Central Bank bond buying and the looming shift to a rising-rate environment. As they do so, institutions are integrating exchange-traded funds (ETFs) more deeply into their investment processes and strategies.

Average ETF allocations among the institutions participating in Greenwich Associates annual European Exchange-Traded Funds Study increased to 10.3 % of total assets in 2017 from just 7.7% in 2016. This growth reflects the continuing adoption of ETFs into institutional portfolios as a standard means of obtaining beta exposures and the introduction of ETFs to a long list of portfolio functions, both strategic and tactical. ETFs are spreading into asset classes outside equities and fixed income. For example, one-third of study participants in 2017 are investing in commodity ETFs, up from 20% the prior year.

Multi-asset investment funds have emerged as one of the most consistent and fast-growing sources of ETF demand in the institutional channel.

Two additional trends are boosting institutional demand for ETFs in Europe:

- **Investments in non-market-cap weighted/smart beta ETFs are growing steadily in institutional portfolios.** The share of study participants investing in these funds has increased 10 percentage points in just two years, to 31%. Half the asset managers participating in the 2017 study are using these products. Given the increasing popularity of factor investing worldwide, demand for smart beta ETFs is expected to continue growing in both retail and institutional portfolios.

- **Multi-asset investment funds have emerged as one of the most consistent and fast-growing sources of ETF demand in the institutional channel.** As investor appetite for these strategies grows, the share of European asset managers buying ETFs for use in multiasset funds increased to approximately 80% in 2017 from 63% in 2016. Even with this strong momentum there is room for growth, since European asset managers running multi-asset funds allocate far fewer portfolio assets to ETFs than do their counterparts in the United States.

Given these powerful trends, ETFs will likely remain on a growth trajectory through the coming year. Approximately 40% of study participants currently investing in equity ETFs plan to increase ETF allocations in that asset class in the next 12 months, as do a quarter of current fixed-income ETF investors. More broadly, Greenwich Associates projects that total global institutional investment in ETFs will see U.S.\$300 billion in flows annually by 2020.

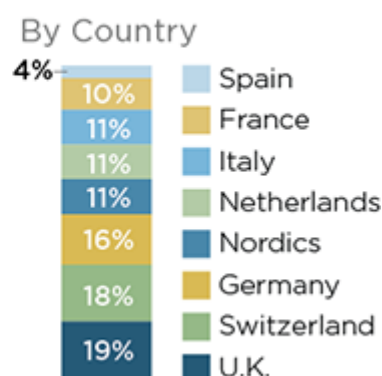
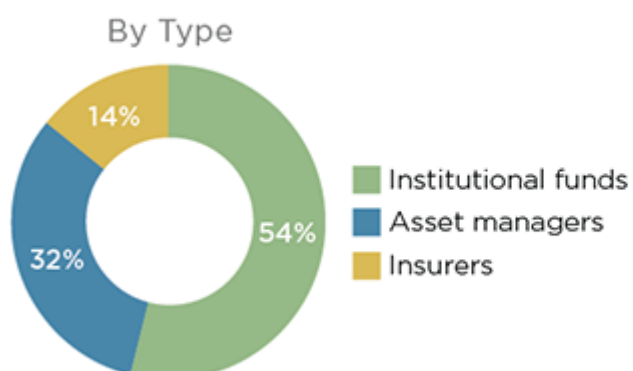
Amid this steady growth, iShares/BlackRock has maintained its position as European institutions' ETF provider of choice. iShares/BlackRock is used as an ETF provider by 9 out of 10 study participants and is considered by these institutions as the "best-in-class" provider in all nine of the product and service categories assessed in the study.

Methodology:

Between October and December 2017, Greenwich Associates interviewed 125 institutional investors for its fourth annual edition of the European Exchange-Traded Funds (ETF) Study. The research universe included 68 institutional funds, 40 asset managers and 17 insurance companies/insurance company asset managers. Corporate pension funds and asset management firms are the most widely represented, followed by insurance companies and public pension funds.

Most of the participants are large institutions. Sixty-four percent of the institutions in the study have assets under management (AUM) of more than \$5 billion, up from 55% in 2016 and 50% in 2015. Among the participants in this year's study, 39% manage more than \$20 billion, and 26% have AUM in excess of \$50 billion. Institutions in the study manage approximately half of assets internally, on average. Respondents also represent a wide range of countries, including France, Germany, Italy, the Netherlands, Nordics, Spain, Switzerland, and the United Kingdom.

RESPONDENTS



www.greenwich.com | ContactUs@greenwich.com

Coalition Greenwich, a division of CRISIL, an S&P Global Company, is a leading global provider of strategic benchmarking, analytics and insights to the financial services industry.

We specialize in providing unique, high-value and actionable information to help our clients improve their business performance.

Our suite of analytics and insights encompass all key performance metrics and drivers: market share, revenue performance, client relationship share and quality, operational excellence, return on equity, behavioral drivers, and industry evolution.

About CRISIL

CRISIL is a leading, agile and innovative global analytics company driven by its mission of making markets function better. It is majority owned by S&P Global Inc., a leading provider of transparent and independent ratings, benchmarks, analytics, and data to the capital and commodity markets worldwide.

CRISIL is India's foremost provider of ratings, data, research, analytics, and solutions with a strong record of growth, culture of innovation, and global footprint.

It has delivered independent opinions, actionable insights and efficient solutions to over 100,000 customers through businesses that operate from India, the U.S., the U.K., Argentina, Poland, China, Hong Kong, and Singapore.

For more information, visit www.crisil.com

Disclaimer and Copyright

This Document is prepared by Coalition Greenwich, which is a part of CRISIL Ltd, an S&P Global company. All rights reserved. This Document may contain analysis of commercial data relating to revenues, productivity and headcount of financial services organisations (together with any other commercial information set out in the Document). The Document may also include statements, estimates and projections with respect to the anticipated future performance of certain companies and as to the market for those companies' products and services.

The Document does not constitute (or purport to constitute) an accurate or complete representation of past or future activities of the businesses or companies considered in it but rather is designed to only highlight the trends. This Document is not (and does not purport to be) a comprehensive Document on the financial state of any business or company. The Document represents the views of Coalition Greenwich as on the date of the Document and Coalition Greenwich has no obligation to update or change it in the light of new or additional information or changed circumstances after submission of the Document.

This Document is not (and does not purport to be) a credit assessment or investment advice and should not

form basis of any lending, investment or credit decision. This Document does not constitute nor form part of an offer or invitation to subscribe for, underwrite or purchase securities in any company. Nor should this Document, or any part of it, form the basis to be relied upon in any way in connection with any contract relating to any securities. The Document is not an investment analysis or research and is not subject to regulatory or legal obligations on the production of, or content of, investment analysis or research.

The data in this Document may reflect the views reported to Coalition Greenwich by the research participants. Interviewees may be asked about their use of and demand for financial products and services and about investment practices in relevant financial markets. Coalition Greenwich compiles the data received, conducts statistical analysis and reviews for presentation purposes to produce the final results.

THE DOCUMENT IS COMPILED FROM SOURCES COALITION GREENWICH BELIEVES TO BE RELIABLE. COALITION GREENWICH DISCLAIMS ALL REPRESENTATIONS OR WARRANTIES, EXPRESSED OR IMPLIED, WITH RESPECT TO THIS DOCUMENT, INCLUDING AS TO THE VALIDITY, ACCURACY, REASONABLENESS OR COMPLETENESS OF THE INFORMATION, STATEMENTS, ASSESSMENTS, ESTIMATES AND PROJECTIONS, ANY WARRANTIES OF MERCHANTABILITY OR FITNESS FOR A PARTICULAR PURPOSE ARISING OUT OF THE USE OF ALL OR ANY OF THIS DOCUMENT. COALITION GREENWICH ACCEPTS NO LIABILITY WHATSOEVER FOR ANY DIRECT, INDIRECT OR CONSEQUENTIAL LOSS OR DAMAGE OF ANY KIND ARISING OUT OF THE USE OF ALL OR ANY OF THIS DOCUMENT.

Coalition Greenwich is a part of CRISIL Ltd, an S&P Global company. ©2024 CRISIL Ltd. All rights reserved.

greenwich.com

ContactUs@greenwich.com

Ph +1203.625.5038